



PCA Context Guide - Meal Support

(Informative)

Personal Care Aide Quality Service Standard

AMSI CONTEXT GUIDE PAF1

Second Draft Edition, Updated July 2026

Aligned with AMSI PCA1 Second Draft Edition, Updated July 2026, current AMSI VOC1, and WQI Whole-Quality vocabulary as applied in PCA1

AMERICAN SUPPORT STANDARDS INITIATIVE

Table of Contents

0. Introduction	5
1. Scope and Purpose	5
1.1 Scope	5
1.2 Purpose	5
1.3 Relationship to PCA1	5
1.4 Intended Use	6
2. Relationship to PCA1 Core Standard	6
2.1 General	6
2.2 Invariant Elements	6
2.3 Context-Specific Interpretation	6
2.4 Relationship to Quality Outcome Criteria	6
2.5 Relationship to Evidence and Quality Claim Statements	6
2.6 Relationship to Other Context Guides	7
3. Meal Support Context Definition	7
3.1 General	7
3.2 Purpose of the Meal Support Context	7
3.3 Typical Meal Support Activities	7
3.4 Characteristics of the Meal Support Context	7
3.5 Context Variability	8
3.6 PAF1-Specific Visibility Issues	8
4. Service Quality Object in the Meal Support Context	9
4.1 General	9
4.2 Constituent Parts of the Service Quality Object	9
4.3 Service Boundary	10
4.4 Internal and External Interfaces	10
4.5 Relationship to the Meal Support Context	10
5. Intended Function and Function Realization	10
5.1 General	10
5.2 Intended Function in the Meal Support Context	10
5.3 Function Realization	10
5.4 Factors Influencing Function Realization	11
5.5 Relationship to Quality Determination	11
6. Context Boundaries and Interfaces	11
6.1 General	11
6.2 Planned and Realized Boundaries and Interfaces	12
6.3 Internal Boundaries	12
6.4 External Boundaries	12
6.5 Internal Interfaces	12
6.6 External Interfaces	13
6.7 Boundary and Interface Verification	13
6.8 Relationship to Quality Determination	13
7. Interpretation of Invariant Core Quality Factors	14
7.1 General	14
7.2 Factor 1 — Protection from Foreseeable Harm	14
7.3 Factor 2 — Maintenance of Health and Bodily Integrity	14
7.4 Factor 3 — Support for Daily Functioning	14
7.5 Factor 4 — Respect for Personhood and Autonomy	14
7.6 Factor 5 — Timely Recognition and Escalation of Risk	15
7.7 Factor 6 — Continuity and Accuracy of Care-Relevant Information	15
7.8 Factor 7 — Control of Infection and Contamination Risks	15
7.9 Factor 8 — Scope-Appropriate Practice and Judgment	15
7.10 Relationship to Section 8	15
8. Interpretation of Invariant Core Quality Indicators and Quality Outcome Criteria	15
8.1 General	15
8.2 Factor 1 — Protection from Foreseeable Harm	16
Indicator 1.1 — Identification of Foreseeable Harm Conditions	16
Indicator 1.2 — Adjustment of Support to Mitigate Identified Risk	16
Indicator 1.3 — Prevention of Avoidable Injury or Harm	17
Indicator 1.4 — Pausing, Modifying, or Escalating When Unsafe Conditions Arise	17
8.3 Factor 2 — Maintenance of Health and Bodily Integrity	18
Indicator 2.1 — Protection of Skin, Joints, and Physical Integrity	18
Indicator 2.2 — Support of Hydration, Nutrition, and Physiological Stability Within Role Scope	18

Indicator 2.3 — Recognition of Physical Changes Relevant to Health Stability	19
Indicator 2.4 — Minimization of Physiological Stress During Assistance	19
8.4 Factor 3 — Support for Daily Functioning	20
Indicator 3.1 — Alignment of Assistance with Functional Ability	20
Indicator 3.2 — Support Without Creating Unnecessary Dependency	20
Indicator 3.3 — Appropriate Use of Available Supports and Equipment Within Role Boundaries	20
Indicator 3.4 — Adaptation of Assistance as Functional Abilities Change	21
8.5 Factor 4 — Respect for Personhood and Autonomy	21
Indicator 4.1 — Maintenance of Privacy and Bodily Dignity	21
Indicator 4.2 — Respect for Choice, Consent, and Individual Preferences	22
Indicator 4.3 — Respect for Cultural, Personal, and Household Values	22
Indicator 4.4 — Absence of Coercive, Disrespectful, or Demeaning Practices	23
8.6 Factor 5 — Timely Recognition and Escalation of Risk	23
Indicator 5.1 — Observation of Relevant Changes in Condition or Response	23
Indicator 5.2 — Judgment Regarding the Significance of Observed Changes Within Role Scope	24
Indicator 5.3 — Timely Communication of Concerns	24
Indicator 5.4 — Appropriate Follow-Through After Escalation	25
8.7 Factor 6 — Continuity and Accuracy of Care-Relevant Information	25
Indicator 6.1 — Accuracy of Information Used to Guide PCA Support	25
Indicator 6.2 — Information Transfer Across Caregivers, Shifts, or Support Arrangements	26
Indicator 6.3 — Consistency with Care Direction or Consumer Instruction	26
Indicator 6.4 — Protection from Information Loss, Distortion, or Inappropriate Disclosure	27
8.8 Factor 7 — Control of Infection and Contamination Risks	27
Indicator 7.1 — Maintenance of Hygienic Service Conditions	27
Indicator 7.2 — Appropriate Use of Clean Technique Within Role Boundaries	28
Indicator 7.3 — Prevention of Cross-Contamination	28
Indicator 7.4 — Recognition and Escalation of Infection or Contamination Risks	29
8.9 Factor 8 — Scope-Appropriate Practice and Judgment	29
Indicator 8.1 — Practice Within Authorized Role Boundaries	29
Indicator 8.2 — Appropriate Judgment Within Role Scope	29
Indicator 8.3 — Avoidance of Unauthorized Diagnosis, Treatment, or Professional Practice	30
Indicator 8.4 — Appropriate Pausing, Assistance Seeking, and Escalation	30
9. Context-Specific Evidence	31
9.1 General	31
9.2 Purpose of Evidence	31
9.3 Sources of Evidence	31
9.4 Evidence Across Function Realization	32
9.5 Sufficiency of Evidence	32
9.6 Relationship to Boundaries and Interfaces	32
9.7 Relationship to Quality Claim Statements	33
10. Context-Specific Quality Claim Statements	33
10.1 General	33
10.2 Basis for Quality Claim Statements	33
10.3 Scope of Quality Claim Statements	33
10.4 Limitations of Quality Claim Statements	33
10.5 Communication of Quality Claim Statements	34
10.6 Relationship to Evidence	34
11. Context-Specific Critical Conditions	34
11.1 General	34
11.2 Relationship to Function Realization	34
11.3 Illustrative Meal-Specific Critical Conditions	34
11.4 Visibility of Critical Conditions in Quality Determination	35
12. Limitations and Non-Prescriptive Interpretation	35
12.1 General	35
12.2 Non-Prescriptive Interpretation	35
12.3 Limits of Task Completion	35
12.4 Non-Substitutability of Critical Conditions	35
12.5 Limits of Documentation and Compliance	35
12.6 Limits of Absence-of-Concern Interpretation	35
12.7 Relationship to PCA1 and SCM1	35
13. Relationship to Care Direction, Training, Rules, and Other Requirements	36
13.1 General	36
13.2 Care Direction and Consumer Direction	36
13.3 Training and Competence Context	36
13.4 Organizational and Program Requirements	36
13.5 Clinical, Legal, Safety, and Emergency Responsibilities	36

13.6 Relationship to Other AMSI Context Guides	36
Annex A (Informative) - Illustrative Service Quality Object in Meal Support	36
A.1 Purpose	36
A.2 Relationship to the Service Quality Object.....	36
A.3 Illustrative Constituent Parts	37
A.4 Illustrative Function Realization	37
A.5 Illustrative Relationship to Quality Determination.....	37
A.6 Illustrative Meal Support Service Quality Object Diagram	37
Annex B (Informative) - PCA1 and PAF1 Core-to-Context Relationship	38
B.1 Purpose	38
B.2 Invariant Core.....	38
B.3 Purpose of the Context Guide.....	38
B.4 Relationship Between the Core and the Context Guide.....	38
B.5 Relationship to Other PCA Context Guides	38
B.6 Core-to-Context Principle.....	38
Annex C (Informative) - Summary of Meal-Specific Factor Interpretation	39
C.1 Purpose.....	39
C.2 Interpretation of the Core Quality Factors	39
C.3 Relationship to PCA1	39
C.4 Core-to-Context Principle.....	39
Annex D (Informative) - Illustrative Meal Support Path of Realization	39
D.1 Purpose.....	39
D.2 Relationship to PCA1	39
D.3 Illustrative Context Path of Realization	39
D.4 Dynamic Nature of Function Realization.....	40
D.5 Relationship to Quality Determination.....	40
Copyright and Use Notice	41

0. Introduction

This Context Guide explains how AMSI PCA1 applies to meal support provided by Personal Care Aides.

Meal support is a specific PCA service context. It may include preparing the meal area, setting up food and drink, assisting with eating and drinking, supporting hydration, helping with related cleanup, observing relevant concerns, and communicating or escalating concerns within the Personal Care Aide role.

Meal support should not be judged only by whether food was prepared, served, or consumed. Quality also depends on whether the actual meal episode is safe, respectful, properly paced, hygienic, responsive to the person's condition, and consistent with communicated diet, texture, allergy, hydration, positioning, consent, refusal, and role-boundary requirements.

This Guide does not change PCA1. It uses the same Service Quality Object, intended function, Core Quality Factors, and Core Quality Indicators established by PCA1, and explains how they apply in the meal support context.

The Guide provides meal-specific Quality Outcome Criteria, examples of evidence, critical conditions, and guidance for responsible Quality Claim Statements.

This Guide is informative and should be used together with PCA1, SCM1, applicable care direction, and other controlling requirements.

1. Scope and Purpose

1.1 Scope

This Context Guide applies to meal support services performed by Personal Care Aides (PCAs).

It covers PCA support directly related to meals, eating, drinking, hydration, and related daily-living meal routines. This may include preparation of the immediate meal area, setup of food and drink, positioning support within Personal Care Aide role boundaries, assistance during eating or drinking, cueing or prompting, pacing support, observation of relevant concerns, and communication or escalation within the Personal Care Aide role.

This Guide applies in homes, community residences, residential facilities, healthcare settings, day settings, and other places where PCA meal support is provided.

The Guide applies regardless of organization, funding source, service model, or support setting.

1.2 Purpose

The purpose of this Context Guide is to:

- explain how PCA1 applies to meal support;
- identify meal-specific conditions that affect quality before, during, and after the meal episode, including food and drink conditions, temperature, positioning, swallowing or choking concerns, hydration, allergies or diet direction as communicated, utensils and adaptive equipment, hygiene, contamination, preferences, refusal, pacing, communication, and changing functional ability;
- provide meal-specific Quality Outcome Criteria;
- give examples of evidence that may support quality determination;
- identify meal-specific boundaries, interfaces, risks, and critical conditions; and
- support responsible and consistent Quality Claim Statements.

1.3 Relationship to PCA1

This Context Guide shall be used together with PCA1. PCA1 establishes the invariant Service Quality Object, intended function, constituent-part logic, Core Quality Factors, Core Quality Indicators,

boundary and interface logic, evidence logic, and Quality Claim Statement logic for Personal Care Aide services.

PAF1 does not modify those invariant elements or create a separate meal-support Service Quality Object. It interprets the PCA1 Core within the meal support context and develops meal-specific Quality Outcome Criteria.

Section 2 summarizes the Core-to-context relationship.

1.4 Intended Use

This Context Guide is intended for organizations, supervisors, Personal Care Aides, trainers, reviewers, quality professionals, service recipients, families, regulators, researchers, and others seeking to understand or determine the quality state of meal support services.

This Guide is informative and supports quality determination. It does not establish clinical feeding procedures, prescribe diets, prescribe food textures, create nutrition plans, replace applicable laws or regulations, or replace individual care direction.

2. Relationship to PCA1 Core Standard

2.1 General

PCA1 is the controlling Core Standard for this Context Guide.

PAF1 provides the meal-specific interpretation of that Core. It should therefore be read as an application guide, not as a replacement for PCA1.

2.2 Invariant Elements

The following elements established by PCA1 remain invariant throughout this Context Guide:

- the Service Quality Object;
- the intended function of the Personal Care Aide service;
- the constituent parts of the Service Quality Object;
- the internal and external boundaries and interfaces of the Service Quality Object;
- the Core Quality Factors; and
- the Core Quality Indicators.

This Context Guide shall not modify or replace these invariant elements.

2.3 Context-Specific Interpretation

This Guide adds context-specific interpretation only where meal support changes how the invariant PCA1 Core becomes observable in real service conditions.

This Guide follows a simple sequence: define the meal support context and service boundary; interpret function realization, boundaries, and interfaces; apply the Core Factors and Indicators; then evaluate evidence, Quality Claim Statements, and Critical Conditions.

2.4 Relationship to Quality Outcome Criteria

Context-specific Quality Outcome Criteria are provided in Section 8. They are derived from the PCA1 Core Quality Indicators and interpreted within the declared meal support boundary.

The criteria do not create new Core Quality Factors or Core Quality Indicators. They describe expected meal-support states or results that make the invariant Core observable in this context.

2.5 Relationship to Evidence and Quality Claim Statements

Evidence and Quality Claim Statements are addressed in Sections 9 and 10 and shall be interpreted together with SCM1.

Evidence supports a Quality Claim Statement only within the declared Service Quality Object, the declared service boundary, the applicable Quality Outcome Criteria, the available evidence basis, and any stated limitations or uncertainties.

2.6 Relationship to Other Context Guides

PAF1 is one member of the AMSI family of Personal Care Aide Context Guides.

Other Context Guides may interpret the same PCA1 Core for different support contexts. Comparisons across guides should preserve the invariant Core while distinguishing the context-specific Quality Outcome Criteria, evidence considerations, interfaces, and Critical Conditions.

3. Meal Support Context Definition

3.1 General

Meal support is a context in which the invariant Personal Care Aide Service Quality Object established by PCA1 is realized through activities that assist a person with meals, eating, drinking, hydration, and closely related daily living functions.

The meal support context is characterized by direct interaction between the person receiving support, the Personal Care Aide, and context elements such as food, drink, utensils, adaptive items, seating, positioning, timing, hygiene conditions, care-relevant information, and external interfaces that may influence realization of the Service Quality Object.

3.2 Purpose of the Meal Support Context

The purpose of the meal support context is to provide conditions in which the intended function of Personal Care Aide services may be realized safely, respectfully, and appropriately while supporting nutrition-related daily functioning, hydration, dignity, choice, autonomy, participation, and comfort.

The meal support context does not create a different Service Quality Object. It provides a context-specific realization of the invariant Service Quality Object established by PCA1.

3.3 Typical Meal Support Activities

Depending upon the person's needs, authorized support, and service arrangement, meal support may include activities such as:

- preparation of the immediate meal area;
- setup of food, drink, utensils, cups, napkins, trays, or adaptive items;
- assistance with safe and comfortable positioning within Personal Care Aide role boundaries;
- support during eating or drinking, including cueing, prompting, pacing, or physical assistance where authorized;
- hydration reminders or support where authorized;
- observation of conditions relevant to meal support;
- communication and role-appropriate escalation of relevant concerns; and
- completion of activities directly associated with the meal support service.

These examples illustrate the meal support context and do not prescribe mandatory tasks or methods of service delivery.

3.4 Characteristics of the Meal Support Context

Meal support commonly involves context-specific conditions including:

- food and drink;
- food or drink temperature;
- positioning, seating, balance, and posture;
- swallowing, coughing, choking signs, fatigue, tolerance, appetite, and distress as observable conditions within Personal Care Aide role boundaries;

- hydration and nutrition-related support within Personal Care Aide role boundaries;
- allergy, diet, texture, or restriction information as communicated through authorized direction;
- utensils, cups, trays, adaptive equipment, and packaging;
- hygiene and contamination conditions;
- hand hygiene and clean handling of food-related items;
- privacy, dignity, choice, consent, refusal, pacing, and cultural or household preferences;
- communication, cueing, sequencing, cognitive load, and distraction;
- timing and routine conditions; and
- changing functional presentation of the person during the meal episode.

These context characteristics influence realization of the intended function and shall therefore be considered when determining the quality state of the Service Quality Object.

3.5 Context Variability

The meal support context may vary according to:

- the person's abilities and support needs;
- food, drink, and hydration needs as directed or communicated;
- meal environment and available space;
- available utensils, supplies, and adaptive equipment;
- household or organizational arrangements;
- cultural, religious, personal, and household food preferences;
- service setting;
- authorized support activities; and
- other context-specific conditions.

Such variability affects interpretation of Quality Outcome Criteria and evidence.

It does not modify the invariant Service Quality Object, intended function, Core Quality Factors, or Core Quality Indicators established by PCA1.

3.6 PAF1-Specific Visibility Issues

Because meal support is performed in a food-, drink-, positioning-, pacing-, hygiene-, and dignity-sensitive context, quality determination under this Guide should not treat meal support as ordinary task completion or as a simple intake record. The actual meal episode should remain visible from setup through eating or drinking, immediate follow-up, communication of concerns, and evidence supporting the declared Quality Claim Statement. The following PAF1-specific issues should remain visible:

- food and drink conditions, including temperature, freshness, texture or restriction information as communicated, portion setup, safe access, and suitability of immediate meal setup within Personal Care Aide role boundaries;
- positioning, seating, posture, balance, fatigue, swallowing or coughing signs, choking concerns, breathing difficulty, distress, appetite changes, nausea, discomfort, or other observable conditions that may change during the meal episode;
- hydration support, nutrition-related daily functioning, and physiological tolerance within the authorized Personal Care Aide role;
- utensils, cups, trays, adaptive items, packaging, spills, clutter, lighting, distractions, and other environmental conditions affecting safe and respectful meal support;
- privacy, dignity, choice, consent, refusal, personal pace, cultural and household food preferences, and protection from coercive or demeaning practices;
- clean and contaminated materials, hand hygiene, surfaces, dishes, utensils, food handling, leftovers, trash, and other infection or contamination-related conditions within the Personal Care Aide role;

- communication, sequencing, cueing, cognitive load, understanding, and response to changing functional presentation during the meal episode;
- continuity of care-relevant information before, during, and after meal support, including concerns that should be communicated through appropriate channels;
- role-boundary questions that arise when meal support reveals conditions requiring clarification, assistance, escalation, or involvement of clinical, supervisory, emergency, dietary, speech-language pathology, or other external systems.

These issues are not additional Core Quality Factors or Core Quality Indicators. They are context-specific visibility conditions that help prevent the meal support context from being reduced to a completed meal, consumed food, or written note.

Sections 6 through 11 apply these visibility issues to boundary and interface interpretation, Indicator-level Quality Outcome Criteria, evidence, Quality Claim Statements, and Critical Conditions.

4. Service Quality Object in the Meal Support Context

4.1 General

The Service Quality Object in this Context Guide is the Personal Care Aide (PCA) meal support service.

Consistent with PCA1, the Service Quality Object consists of the occupational work performed by the Personal Care Aide together with the results produced by that work within the declared service boundary.

The quality state determined under this Context Guide applies to the Service Quality Object as a whole rather than to individual constituent parts considered in isolation.

4.2 Constituent Parts of the Service Quality Object

Within the meal support context, this Context Guide applies the invariant constituent-part logic established by PCA1. The Service Quality Object consists of the interacting constituent parts necessary to realize its intended function in the meal support context.

These constituent parts include:

- the person receiving support;
- the Personal Care Aide;
- the meal support work performed;
- the results produced by that work;
- the intended function of the service as realized in the meal support context;
- the internal boundaries and interfaces among constituent parts;
- the external boundary and external interfaces through which the service interacts with surrounding systems.

The meal support Service Quality Object does not become the food, drink, diet order, kitchen, documentation, care plan, or task list.

Food, drink, utensils, adaptive items, seating, positioning, the meal environment, care-relevant information, care direction, family input, supervision, healthcare communication, diet or texture direction as communicated, and similar conditions are treated as context elements or interface conditions.

They influence realization of the Service Quality Object and may be included in the declared service boundary only to the extent relevant to the Quality Claim Statement being made. They do not redefine the invariant Service Quality Object established by PCA1.

4.3 Service Boundary

The declared Service Quality Object shall have clearly identified boundaries for the meal support service being assessed.

The service boundary defines what is included in, and excluded from, the meal-support quality determination.

Quality Claim Statements made using this Context Guide shall identify the declared service boundary and shall not extend beyond the evidence available for that boundary.

4.4 Internal and External Interfaces

Internal and external interfaces in the meal support context are interpreted in Section 6.

Examples include direct interaction with the person, the meal environment, food and drink, care-relevant information, and external parties when relevant to the declared service boundary.

4.5 Relationship to the Meal Support Context

The meal support context provides the conditions under which the Service Quality Object is realized.

Changes in the meal environment, the person's condition, food or drink conditions, available equipment, service arrangements, or other contextual conditions may influence realization of the intended function.

Such contextual variation affects interpretation of Quality Outcome Criteria and evidence.

It does not change the identity of the Service Quality Object established by PCA1.

5. Intended Function and Function Realization

5.1 General

The intended function of the Personal Care Aide Service Quality Object remains the same as established by PCA1.

This Context Guide interprets how that intended function is realized within the meal support context.

Function realization is determined by the extent to which the meal support service achieves its intended results through appropriate occupational work performed within the declared service boundary.

5.2 Intended Function in the Meal Support Context

Within the meal support context, the intended function is to support the person in meals, eating, drinking, hydration, and related daily living activities in a manner that:

- protects health, safety, and bodily integrity;
- supports daily functioning, nutrition-related daily routines, and hydration support within Personal Care Aide role boundaries;
- preserves dignity, choice, privacy, personhood, and autonomy;
- recognizes and responds appropriately to relevant changes or risks within the Personal Care Aide role;
- supports continuity of care-relevant information;
- minimizes infection and contamination risks within Personal Care Aide role boundaries; and
- remains consistent with the authorized scope of Personal Care Aide practice.

5.3 Function Realization

Function realization occurs through the interaction of the constituent parts of the Service Quality Object during meal support.

It is influenced by:

- the person's functional presentation;
- the work performed by the Personal Care Aide;
- food, drink, utensils, and meal setup;
- positioning, pacing, and tolerance;
- available equipment and materials;
- communication and cueing;
- service-related information;
- internal and external boundaries and interfaces; and
- other context-specific conditions affecting the meal support service.

Function realization is therefore evaluated as the realization of the Service Quality Object as a whole rather than as completion of individual meal tasks.

In the meal support context, function realization becomes visible through the manner in which the service manages the whole meal episode: setup, positioning, pacing, food and drink conditions, hydration support, preferences, refusal, hygiene, contamination, equipment use, communication, observable response, and role-appropriate follow-up. A prepared meal, empty plate, consumed drink, or completed routine is therefore not sufficient by itself to demonstrate realization of the intended function.

5.4 Factors Influencing Function Realization

The main meal-specific conditions influencing function realization are identified in Sections 3.4 and 3.6.

Those conditions are applied in Sections 6 through 11 through boundary, Indicator, evidence, Quality Claim Statement, and Critical Condition interpretation.

5.5 Relationship to Quality Determination

Quality determination under this Context Guide concerns the extent to which the intended function is realized within the declared meal support context and service boundary.

Accordingly, quality determination shall consider:

- the Service Quality Object;
- the intended function;
- realization of that intended function;
- the applicable Core Quality Factors;
- the applicable Core Quality Indicators;
- the context-specific Quality Outcome Criteria;
- the available evidence;
- applicable Critical Conditions identified in Section 11; and
- the declared Quality Claim Statement.

Completion of meal activities, consumption of food or drink, compliance with routine procedures, or absence of observable problems does not, by itself, demonstrate satisfactory realization of the intended function.

6. Context Boundaries and Interfaces

6.1 General

The intended function of the Personal Care Aide Service Quality Object is realized within defined boundaries and through internal and external interfaces.

Identification and interpretation of these boundaries and interfaces are essential for determining the quality state of the Service Quality Object within the meal support context.

The boundaries and interfaces described in this section are context-specific interpretations of the invariant Service Quality Object established by PCA1.

6.2 Planned and Realized Boundaries and Interfaces

Before meal support begins, some boundaries and interfaces may be identified through care direction, the person's preferences, service plans, diet or texture direction as communicated, equipment availability, environmental conditions, and known support needs.

However, not all boundaries and interfaces can be fully understood from planning alone.

Some become visible only when the meal support service is actually performed.

For example, actual positioning, fatigue, coughing, choking concern, refusal, appetite, tolerance, communication difficulty, equipment usability, food temperature, hygiene concern, or environmental limitation may appear or change during the meal episode.

Quality determination shall therefore consider both planned service conditions and realized service conditions observed during actual support.

6.3 Internal Boundaries

Internal boundaries separate the constituent parts of the Service Quality Object while enabling their interaction during realization of the intended function.

Within the meal support context, important internal boundaries include:

- the boundary between the person receiving support and the Personal Care Aide;
- the boundary between occupational work and the results produced;
- the boundary between assistance and the person's own participation;
- the boundary between observation and clinical, dietary, or therapeutic judgment;
- the boundary between service-related information and service actions; and
- other boundaries influencing realization of the intended function.

These internal boundaries are dynamic and may change during realization of the meal support service.

6.4 External Boundaries

External boundaries distinguish the Service Quality Object from external systems that influence, support, regulate, or interact with the meal support service.

Examples include:

- healthcare services;
- dietary or nutrition services;
- speech-language pathology or swallowing-related services;
- provider organizations;
- consumer-directed service arrangements;
- family members and informal caregivers;
- regulatory authorities;
- funding organizations;
- emergency services;
- food-service or meal-delivery systems where applicable;
- equipment suppliers; and
- other external organizations or individuals.

These external systems are not constituent parts of the Service Quality Object.

6.5 Internal Interfaces

Internal interfaces are the points of interaction between constituent parts of the Service Quality Object.

Examples within the meal support context include:

- communication between the person and the Personal Care Aide;
- physical interaction during meal support;
- interaction with food, drink, utensils, cups, trays, adaptive items, and equipment;
- information supporting the meal activity;
- interaction between work performed and the results produced; and
- interaction among other constituent parts affecting realization of the intended function.

Quality determination considers whether these interfaces contribute to or interfere with realization of the intended function.

6.6 External Interfaces

External interfaces connect the Service Quality Object with external systems.

Examples include:

- communication with supervisors;
- communication with family members;
- communication with healthcare professionals;
- communication with dietary or speech-language pathology professionals where relevant and authorized;
- communication with consumer-directed representatives;
- reporting of observed concerns;
- information exchange;
- care direction; and
- other interactions relevant to the meal support service.

External interfaces may influence realization of the intended function without becoming constituent parts of the Service Quality Object.

6.7 Boundary and Interface Verification

Because some boundaries and interfaces become visible only during actual service realization, quality determination should not rely solely on planned service arrangements.

Evidence may be needed to verify whether relevant boundaries and interfaces operated as expected during the meal support service.

For example, evidence may show whether support matched actual ability, whether positioning was safe and comfortable, whether food or drink concerns were recognized, whether communication was understood, whether refusal or distress was respected, whether hygiene conditions were maintained, or whether escalation occurred when unsafe conditions appeared.

Verification of boundaries and interfaces does not require intrusive monitoring or clinical evaluation.

It requires sufficient evidence to support the Quality Claim Statement being made.

6.8 Relationship to Quality Determination

Boundaries and interfaces influence realization of the intended function throughout the meal support service.

Accordingly, determination of the quality state should consider:

- whether relevant boundaries have been appropriately identified;
- whether significant interfaces have been appropriately recognized;
- whether planned conditions were consistent with realized conditions;
- whether interactions across those interfaces support realization of the intended function; and

- whether unresolved boundary or interface conditions affect applicable Quality Outcome Criteria, available evidence, or Quality Claim Statements.

Identification of boundaries and interfaces does not, by itself, determine quality.

Rather, it provides the context necessary for consistent interpretation of the Core Quality Factors, Core Quality Indicators, Quality Outcome Criteria, evidence, and Quality Claim Statements.

7. Interpretation of Invariant Core Quality Factors

7.1 General

The eight Core Quality Factors established by PCA1 remain invariant within the meal support context.

This section interprets the purpose and significance of each Factor as it applies to realization of the intended function of the Personal Care Aide Service Quality Object during meal support.

The Factors identify the broad dimensions through which realization of the intended function becomes observable.

Context-specific interpretation does not modify the Core Quality Factors. It explains how they are understood within meal support.

The detailed interpretation of the Core Quality Indicators, together with context-specific Quality Outcome Criteria and illustrative evidence, is provided in Section 8.

Section 3.6 identifies the PAF1-specific visibility issues that should remain visible when the Factors are interpreted.

7.2 Factor 1 — Protection from Foreseeable Harm

Within the meal support context, this Factor concerns foreseeable conditions that may threaten safety, bodily integrity, dignity, or continuity of support.

Typical meal-related conditions include unsafe positioning, choking signs, swallowing difficulty as observed, hot food or drink, spills, allergies or restriction information as communicated, fatigue, distress, contamination, unsafe utensils or equipment, and other foreseeable conditions affecting realization of the intended function.

7.3 Factor 2 — Maintenance of Health and Bodily Integrity

Within the meal support context, this Factor concerns support that protects bodily integrity, comfort, hydration-related stability, nutrition-related daily functioning, physiological tolerance, and general well-being while remaining within the Personal Care Aide role.

The emphasis is on supporting health-related daily functioning through appropriate assistance rather than performing clinical, dietary, or therapeutic care.

7.4 Factor 3 — Support for Daily Functioning

Within the meal support context, this Factor concerns assistance that enables the person to participate in meals, eating, drinking, hydration routines, and related daily living activities consistent with the person's functional abilities, preferences, and support needs.

The emphasis is on realization of daily functioning rather than simple completion of meal tasks or intake.

7.5 Factor 4 — Respect for Personhood and Autonomy

Within the meal support context, this Factor concerns preservation of dignity, choice, consent, refusal, pacing, cultural and household preferences, and respect for the person throughout realization of the meal support service.

7.6 Factor 5 — Timely Recognition and Escalation of Risk

Within the meal support context, this Factor concerns recognition of changes that become visible during meal support and appropriate communication, escalation, and follow-through within the Personal Care Aide role.

Particular attention is given to conditions that emerge during realization of the service rather than conditions known only during planning.

7.7 Factor 6 — Continuity and Accuracy of Care-Relevant Information

Within the meal support context, this Factor concerns the availability, accuracy, continuity, and appropriate communication of information necessary for realization of the intended function before, during, and after meal support.

7.8 Factor 7 — Control of Infection and Contamination Risks

Within the meal support context, this Factor concerns maintenance of hygienic conditions, prevention of contamination, safe handling of food-related items within Personal Care Aide role boundaries, and appropriate recognition and communication of infection or contamination concerns.

7.9 Factor 8 — Scope-Appropriate Practice and Judgment

Within the meal support context, this Factor concerns realization of meal support within authorized occupational boundaries while exercising appropriate judgment, recognizing role limitations, and seeking assistance or escalation whenever necessary.

7.10 Relationship to Section 8

Section 8 is the main application section of this Guide. It applies each invariant PCA1 Core Quality Indicator to meal support by providing context interpretation, context-specific Quality Outcome Criteria, and illustrative evidence considerations.

The Factor summaries in Section 7 should therefore be read as orientation. The Indicator-level interpretation in Section 8 provides the primary basis for PAF1-specific quality determination.

8. Interpretation of Invariant Core Quality Indicators and Quality Outcome Criteria

8.1 General

This section applies the invariant Core Quality Indicators established by PCA1 to the meal support context.

The Core Quality Indicators remain unchanged.

For each Indicator, this section provides meal-specific interpretation, meal-specific Quality Outcome Criteria, and illustrative evidence considerations.

The Quality Outcome Criteria presented in this section are derived from the invariant Core Quality Indicators and describe expected meal-support states or results.

They do not establish new Core Quality Factors or Core Quality Indicators.

Each Quality Outcome Criterion shall be applied only within the declared meal support context, the declared service boundary, the applicable evidence basis, and the limitations identified in the Quality Claim Statement.

Illustrative Evidence Considerations are provided to show what evidence may support determination of the applicable Quality Outcome Criteria and responsible Quality Claim Statements.

The Indicator-level criteria below apply the visibility issues identified in Section 3.6 to the eight invariant PCA1 Core Factors.

8.2 Factor 1 — Protection from Foreseeable Harm

Indicator 1.1 — Identification of Foreseeable Harm Conditions

Context Interpretation

Within the meal support context, foreseeable harm conditions may include unsafe positioning, choking signs, coughing, swallowing difficulty as observed, unsafe food or drink temperature, spills, unstable seating, unsuitable utensils, allergy or restriction information as communicated, contamination, fatigue, distress, refusal, communication barriers, or other conditions that may interfere with realization of the intended function.

Context-Specific Quality Outcome Criteria

For this indicator in the meal support context, Quality Outcome Criteria include, as applicable to the declared service boundary:

- foreseeable meal-support hazards are recognized before or during service delivery;
- relevant environmental, functional, food-related, hydration-related, and personal conditions are considered;
- conditions exceeding the Personal Care Aide role are recognized for communication or escalation;
- foreseeable harm conditions are not ignored because meals are considered routine activities.

Illustrative Evidence Considerations

Illustrative evidence may include:

- direct observation of the meal environment;
- observations made during the meal episode;
- communication records;
- support documentation;
- consumer or caregiver feedback;
- reports of identified hazards or concerns; and
- other evidence relevant to the declared Quality Claim Statement.

Indicator 1.2 — Adjustment of Support to Mitigate Identified Risk

Context Interpretation

Meal support may require modification of pacing, positioning, sequencing, cueing, communication, environmental setup, food or drink presentation, privacy protection, use of authorized utensils or equipment, or assistance level in response to identified conditions.

Context-Specific Quality Outcome Criteria

For this indicator in the meal support context, Quality Outcome Criteria include, as applicable to the declared service boundary:

- support is adjusted to actual meal conditions, including positioning, pacing, communication, food or drink presentation, utensils or adaptive items, hygiene conditions, and refusal or distress where relevant;
- adjustments remain within the Personal Care Aide role;
- identified risks are addressed appropriately;
- support remains responsive throughout realization of the meal support service.

Illustrative Evidence Considerations

Illustrative evidence may include:

- observation of modified support;
- reports describing changes in assistance;

- communication records;
- consumer feedback;
- caregiver observations; and
- other evidence supporting the Quality Claim Statement.

Indicator 1.3 — Prevention of Avoidable Injury or Harm

Context Interpretation

Within the meal support context, prevention of avoidable harm includes avoidable choking-related danger, burns from hot food or drink, falls or injury related to positioning, unnecessary discomfort, loss of dignity, contamination, psychological distress, or other preventable adverse conditions occurring within the declared service boundary.

Context-Specific Quality Outcome Criteria

For this indicator in the meal support context, Quality Outcome Criteria include, as applicable to the declared service boundary:

- avoidable harm is minimized;
- meal support remains consistent with realization of the intended function;
- dignity-related harm is considered together with physical harm;
- conditions outside the Personal Care Aide role are recognized and communicated appropriately.

Illustrative Evidence Considerations

Illustrative evidence may include:

- observations;
- incident reports;
- communication records;
- consumer feedback;
- follow-up actions; and
- other evidence relevant to the Quality Claim Statement.

Indicator 1.4 — Pausing, Modifying, or Escalating When Unsafe Conditions Arise

Context Interpretation

When unsafe conditions become visible during meal support, realization of the intended function may require pausing, modifying, or discontinuing support, seeking assistance, or escalating concerns through appropriate channels.

Context-Specific Quality Outcome Criteria

For this indicator in the meal support context, Quality Outcome Criteria include, as applicable to the declared service boundary:

- unsafe continuation of meal support is avoided;
- appropriate assistance or escalation occurs;
- actions remain within the Personal Care Aide role;
- unsafe conditions are not ignored.

Illustrative Evidence Considerations

Illustrative evidence may include:

- communication records;
- incident reports;
- observations of modified support;
- documentation of assistance sought;

- supervisor or caregiver reports; and
- other evidence supporting the Quality Claim Statement.

8.3 Factor 2 — Maintenance of Health and Bodily Integrity

Indicator 2.1 — Protection of Skin, Joints, and Physical Integrity

Context Interpretation

Within the meal support context, meal activities may affect posture, positioning, joints, skin, physical comfort, and bodily integrity, especially when assistance, seating, trays, adaptive items, or prolonged positioning are involved.

Context-Specific Quality Outcome Criteria

For this indicator in the meal support context, Quality Outcome Criteria include, as applicable to the declared service boundary:

- meal support minimizes unnecessary pressure, awkward positioning, pulling, rough handling, or discomfort;
- skin, joints, posture, and bodily integrity are appropriately protected during support;
- observable concerns are recognized and communicated through appropriate channels;
- support remains respectful of the person's dignity and comfort.

Illustrative Evidence Considerations

Illustrative evidence may include:

- direct observation of meal support;
- observations of positioning and movement;
- communication records;
- consumer feedback;
- reports of discomfort or concerns; and
- other evidence supporting the Quality Claim Statement.

Indicator 2.2 — Support of Hydration, Nutrition, and Physiological Stability Within Role Scope

Context Interpretation

Meal support may contribute to hydration, nutrition-related daily functioning, and physiological stability through appropriate assistance, reminders, pacing, comfort, and observation within the Personal Care Aide role.

Context-Specific Quality Outcome Criteria

For this indicator in the meal support context, Quality Outcome Criteria include, as applicable to the declared service boundary:

- meal support considers hydration, nutrition-related support needs, tolerance, comfort, observable intake-related concerns, and communicated diet, texture, allergy, or restriction information within Personal Care Aide role boundaries;
- pacing is appropriate to the person's presentation;
- observable concerns are communicated appropriately;
- physiological stress is not unnecessarily increased during meal support.

Illustrative Evidence Considerations

Illustrative evidence may include:

- observations during meals;
- reports of fatigue, discomfort, reduced intake, thirst, or tolerance concerns;
- communication records;

- consumer feedback;
- support documentation; and
- other evidence relevant to the Quality Claim Statement.

Indicator 2.3 — Recognition of Physical Changes Relevant to Health Stability

Context Interpretation

Meal support may reveal observable physical changes including coughing, choking signs, breathing difficulty, fatigue, weakness, nausea, pain, distress, reduced alertness, appetite changes, hydration concerns, or other conditions that may influence realization of the intended function.

Context-Specific Quality Outcome Criteria

For this indicator in the meal support context, Quality Outcome Criteria include, as applicable to the declared service boundary:

- observable physical changes are recognized when relevant;
- changes affecting meal support are communicated appropriately;
- recognition remains within the Personal Care Aide role;
- diagnosis, treatment, or clinical interpretation is not undertaken by the Personal Care Aide.

Illustrative Evidence Considerations

Illustrative evidence may include:

- observations;
- communication records;
- support documentation;
- reports to authorized persons;
- follow-up actions; and
- other evidence supporting the Quality Claim Statement.

Indicator 2.4 — Minimization of Physiological Stress During Assistance

Context Interpretation

Meal support should minimize avoidable physiological stress arising from positioning, pacing, food or drink temperature, prolonged sitting, fatigue, anxiety, choking concern, discomfort, or other meal-related conditions.

Context-Specific Quality Outcome Criteria

For this indicator in the meal support context, Quality Outcome Criteria include, as applicable to the declared service boundary:

- meal support is appropriately paced;
- avoidable physiological stress is minimized;
- discomfort, distress, or reduced tolerance results in appropriate modification or communication;
- efficiency or routine completion does not override safety, dignity, or well-being.

Illustrative Evidence Considerations

Illustrative evidence may include:

- direct observation;
- consumer feedback;
- communication records;
- support documentation;
- reports regarding modified assistance; and
- other evidence relevant to the Quality Claim Statement.

8.4 Factor 3 — Support for Daily Functioning

Indicator 3.1 — Alignment of Assistance with Functional Ability

Context Interpretation

Within the meal support context, assistance should be aligned with the person's actual ability to participate in meal setup, eating, drinking, hydration routines, communication, choice, and cleanup-related tasks within Personal Care Aide role boundaries.

Context-Specific Quality Outcome Criteria

For this indicator in the meal support context, Quality Outcome Criteria include, as applicable to the declared service boundary:

- assistance is consistent with the person's actual functional abilities;
- support reflects the person's current presentation rather than assumptions or routine practice;
- changes in functional ability during meal support are recognized;
- support remains responsive throughout realization of the intended function.

Illustrative Evidence Considerations

Illustrative evidence may include:

- direct observation of meal support;
- consumer participation during meals;
- communication records;
- support documentation;
- consumer or caregiver feedback; and
- other evidence supporting the Quality Claim Statement.

Indicator 3.2 — Support Without Creating Unnecessary Dependency

Context Interpretation

Meal support should encourage the person's participation to the greatest extent appropriate while avoiding unnecessary dependency or inappropriate withdrawal of assistance.

Context-Specific Quality Outcome Criteria

For this indicator in the meal support context, Quality Outcome Criteria include, as applicable to the declared service boundary:

- participation is encouraged whenever appropriate;
- unnecessary dependency is avoided;
- assistance is neither excessive nor insufficient;
- realization of the intended function remains the primary objective.

Illustrative Evidence Considerations

Illustrative evidence may include:

- observation of participation during meal support;
- consumer feedback;
- caregiver observations;
- communication records;
- support documentation; and
- other evidence relevant to the Quality Claim Statement.

Indicator 3.3 — Appropriate Use of Available Supports and Equipment Within Role Boundaries

Context Interpretation

Meal support may involve authorized utensils, cups, plates, trays, adaptive devices, seating supports, and other meal-related materials that contribute to realization of the intended function.

Context-Specific Quality Outcome Criteria

For this indicator in the meal support context, Quality Outcome Criteria include, as applicable to the declared service boundary:

- authorized equipment or adaptive items are used appropriately;
- utensils, cups, trays, seating supports, and related items contribute to safe and effective meal support;
- equipment or material concerns are recognized and communicated appropriately;
- support remains within the authorized Personal Care Aide role.

Illustrative Evidence Considerations

Illustrative evidence may include:

- direct observation;
- communication records;
- equipment-related reports;
- consumer feedback;
- support documentation; and
- other evidence supporting the Quality Claim Statement.

Indicator 3.4 — Adaptation of Assistance as Functional Abilities Change

Context Interpretation

Functional abilities may change during realization of the meal support service because of fatigue, pain, cognition, appetite, anxiety, choking concern, tolerance, communication, or other meal-specific conditions.

Context-Specific Quality Outcome Criteria

For this indicator in the meal support context, Quality Outcome Criteria include, as applicable to the declared service boundary:

- assistance is adapted to changing functional presentation;
- modifications remain within the Personal Care Aide role;
- significant changes are communicated appropriately;
- realization of the intended function continues to guide the support provided.

Illustrative Evidence Considerations

Illustrative evidence may include:

- direct observation;
- communication records;
- support documentation;
- reports describing modified assistance;
- consumer or caregiver feedback; and
- other evidence relevant to the Quality Claim Statement.

8.5 Factor 4 — Respect for Personhood and Autonomy

Indicator 4.1 — Maintenance of Privacy and Bodily Dignity

Context Interpretation

Within the meal support context, eating and drinking may involve vulnerability, dependence, spills, coughing, slow pace, food preferences, cultural meaning, and close physical assistance.

Context-Specific Quality Outcome Criteria

For this indicator in the meal support context, Quality Outcome Criteria include, as applicable to the declared service boundary:

- privacy and dignity are maintained throughout the meal support service;
- unnecessary embarrassment, exposure, or public correction is avoided;
- bodily dignity is preserved during assistance;
- communication and interaction remain respectful;
- realization of the intended function supports both physical assistance and preservation of personhood.

Illustrative Evidence Considerations

Illustrative evidence may include:

- direct observation of meal support;
- consumer feedback;
- caregiver observations;
- communication records;
- support documentation; and
- other evidence supporting the Quality Claim Statement.

Indicator 4.2 — Respect for Choice, Consent, and Individual Preferences

Context Interpretation

Meal support should recognize the person's choices, consent, refusal, preferences, pace, and participation throughout realization of the meal support service.

Context-Specific Quality Outcome Criteria

For this indicator in the meal support context, Quality Outcome Criteria include, as applicable to the declared service boundary:

- consent is appropriately respected;
- individual food, drink, timing, and routine preferences are recognized when consistent with safety and authorized direction;
- meal support proceeds at an appropriate pace;
- refusal, discomfort, or distress is recognized and addressed appropriately;
- support remains consistent with the intended function.

Illustrative Evidence Considerations

Illustrative evidence may include:

- direct observation;
- consumer feedback;
- communication records;
- support documentation;
- reports describing preferences or concerns; and
- other evidence relevant to the Quality Claim Statement.

Indicator 4.3 — Respect for Cultural, Personal, and Household Values

Context Interpretation

Meal routines may reflect personal, cultural, religious, linguistic, household, family, dietary, or lifestyle preferences.

Context-Specific Quality Outcome Criteria

For this indicator in the meal support context, Quality Outcome Criteria include, as applicable to the declared service boundary:

- relevant personal and cultural food preferences are recognized;
- support reflects household or family routines where appropriate;
- uncertainty or conflict is communicated appropriately;
- realization of the intended function remains respectful of the person's individuality.

Illustrative Evidence Considerations

Illustrative evidence may include:

- consumer direction;
- family or caregiver feedback;
- communication records;
- support documentation;
- direct observation; and
- other evidence supporting the Quality Claim Statement.

Indicator 4.4 — Absence of Coercive, Disrespectful, or Demeaning Practices

Context Interpretation

Meal support shall be free from coercive, humiliating, intimidating, disrespectful, or demeaning practices, including pressuring, shaming, rushing, ridiculing, or forcing the person in relation to food, drink, pace, appetite, or refusal.

Context-Specific Quality Outcome Criteria

For this indicator in the meal support context, Quality Outcome Criteria include, as applicable to the declared service boundary:

- support is free from coercive or demeaning practices;
- communication remains respectful;
- unnecessary force, humiliation, pressure, or intimidation is absent;
- realization of the intended function preserves trust, dignity, and personhood.

Illustrative Evidence Considerations

Illustrative evidence may include:

- direct observation;
- consumer feedback;
- caregiver observations;
- communication records;
- complaints or commendations;
- support documentation; and
- other evidence relevant to the Quality Claim Statement.

8.6 Factor 5 — Timely Recognition and Escalation of Risk

Indicator 5.1 — Observation of Relevant Changes in Condition or Response

Context Interpretation

Within the meal support context, observable changes may include coughing, choking signs, breathing changes, fatigue, distress, refusal, reduced intake, unusual thirst, nausea, pain, confusion, reduced alertness, communication change, equipment failure, food or drink temperature or texture concern, hydration concern, hygiene concern, contamination concern, or other circumstances affecting realization of the intended function.

Context-Specific Quality Outcome Criteria

For this indicator in the meal support context, Quality Outcome Criteria include, as applicable to the declared service boundary:

- relevant changes are recognized during realization of the meal support service;
- observations are based upon actual service conditions rather than assumptions;
- changes affecting realization of the intended function are not ignored;
- observations remain within the Personal Care Aide role.

Illustrative Evidence Considerations

Illustrative evidence may include:

- direct observation during meal support;
- communication records;
- support documentation;
- consumer or caregiver feedback;
- reports of observed changes; and
- other evidence supporting the Quality Claim Statement.

Indicator 5.2 — Judgment Regarding the Significance of Observed Changes Within Role Scope

Context Interpretation

Observed changes may require the Personal Care Aide to determine whether continuation of support remains appropriate or whether communication, modification of assistance, assistance seeking, or escalation is required.

Context-Specific Quality Outcome Criteria

For this indicator in the meal support context, Quality Outcome Criteria include, as applicable to the declared service boundary:

- relevant changes are appropriately evaluated within Personal Care Aide role boundaries;
- appropriate distinction is made between routine variation and significant change;
- uncertainty results in appropriate communication or escalation;
- realization of the intended function remains the guiding consideration.

Illustrative Evidence Considerations

Illustrative evidence may include:

- communication records;
- escalation documentation;
- supervisor observations;
- support documentation;
- reports describing decision-making within Personal Care Aide role boundaries; and
- other evidence relevant to the Quality Claim Statement.

Indicator 5.3 — Timely Communication of Concerns

Context Interpretation

Realization of the intended function may require timely communication of concerns identified before, during, or immediately following meal support.

Context-Specific Quality Outcome Criteria

For this indicator in the meal support context, Quality Outcome Criteria include, as applicable to the declared service boundary:

- significant concerns are communicated in a timely manner;
- communication follows authorized pathways;
- necessary information is communicated accurately;
- unnecessary disclosure of personal information is avoided.

Illustrative Evidence Considerations

Illustrative evidence may include:

- communication records;
- support documentation;
- reports to supervisors or authorized persons;
- consumer or caregiver feedback;
- follow-up records; and
- other evidence supporting the Quality Claim Statement.

Indicator 5.4 — Appropriate Follow-Through After Escalation

Context Interpretation

Following communication or escalation, realization of the intended function requires appropriate follow-through within the Personal Care Aide role.

Context-Specific Quality Outcome Criteria

For this indicator in the meal support context, Quality Outcome Criteria include, as applicable to the declared service boundary:

- follow-through remains consistent with the Personal Care Aide role;
- communicated concerns are appropriately addressed;
- updated direction is followed where applicable;
- unsafe continuation of meal support is avoided.

Illustrative Evidence Considerations

Illustrative evidence may include:

- communication records;
- follow-up documentation;
- supervisor reports;
- observations of modified support;
- consumer or caregiver feedback; and
- other evidence relevant to the Quality Claim Statement.

8.7 Factor 6 — Continuity and Accuracy of Care-Relevant Information

Indicator 6.1 — Accuracy of Information Used to Guide PCA Support

Context Interpretation

Within the meal support context, realization of the intended function depends upon accurate, current, and relevant information available before and during meal support.

Context-Specific Quality Outcome Criteria

For this indicator in the meal support context, Quality Outcome Criteria include, as applicable to the declared service boundary:

- information used during meal support is accurate and relevant;
- outdated, incomplete, or conflicting information is recognized and clarified where appropriate;
- meal support reflects current service information, including authorized diet, texture, allergy, restriction, hydration, or positioning information when applicable and communicated;

- realization of the intended function is not based upon unsupported assumptions.

Illustrative Evidence Considerations

Illustrative evidence may include:

- support documentation;
- communication records;
- consumer direction;
- observations during service;
- reports from authorized persons; and
- other evidence supporting the Quality Claim Statement.

Indicator 6.2 — Information Transfer Across Caregivers, Shifts, or Support Arrangements

Context Interpretation

Meal support may involve transitions between caregivers, family members, agencies, consumer-directed arrangements, meal periods, or different service settings.

Context-Specific Quality Outcome Criteria

For this indicator in the meal support context, Quality Outcome Criteria include, as applicable to the declared service boundary:

- relevant meal-support information is communicated appropriately;
- continuity of support is maintained across service transitions;
- critical information is not lost or distorted during information transfer;
- communication remains consistent with privacy and role boundaries.

Illustrative Evidence Considerations

Illustrative evidence may include:

- handoff documentation;
- communication records;
- supervisor observations;
- consumer or caregiver feedback;
- service documentation; and
- other evidence relevant to the Quality Claim Statement.

Indicator 6.3 — Consistency with Care Direction or Consumer Instruction

Context Interpretation

Meal support should remain consistent with applicable care direction, authorized consumer instruction, and the intended function of the Service Quality Object.

Context-Specific Quality Outcome Criteria

For this indicator in the meal support context, Quality Outcome Criteria include, as applicable to the declared service boundary:

- meal support remains consistent with authorized direction;
- uncertainty is recognized and communicated appropriately;
- realization of the intended function remains responsive to actual service conditions;
- the Personal Care Aide does not independently modify clinical, dietary, texture, hydration, or organizational direction beyond the authorized role.

Illustrative Evidence Considerations

Illustrative evidence may include:

- care direction;
- consumer instruction;
- communication records;
- support documentation;
- observations during service; and
- other evidence supporting the Quality Claim Statement.

Indicator 6.4 — Protection from Information Loss, Distortion, or Inappropriate Disclosure

Context Interpretation

Information supporting realization of the meal support service should remain accurate, complete, relevant, and appropriately protected.

Context-Specific Quality Outcome Criteria

For this indicator in the meal support context, Quality Outcome Criteria include, as applicable to the declared service boundary:

- care-relevant information is protected from unnecessary loss or distortion;
- information is communicated only through appropriate channels;
- privacy is preserved throughout information handling;
- realization of the intended function is supported by appropriate continuity of information.

Illustrative Evidence Considerations

Illustrative evidence may include:

- communication records;
- service documentation;
- observations;
- privacy-related reports;
- consumer feedback; and
- other evidence relevant to the Quality Claim Statement.

8.8 Factor 7 — Control of Infection and Contamination Risks

Indicator 7.1 — Maintenance of Hygienic Service Conditions

Context Interpretation

Within the meal support context, realization of the intended function depends upon maintaining hygienic service conditions appropriate to food, drink, utensils, surfaces, and immediate meal setup.

Context-Specific Quality Outcome Criteria

For this indicator in the meal support context, Quality Outcome Criteria include, as applicable to the declared service boundary:

- hygienic conditions appropriate to the meal support activity are maintained;
- food, drink, utensils, cups, surfaces, and meal materials are handled appropriately within Personal Care Aide role boundaries;
- contamination concerns are recognized during service realization;
- realization of the intended function is not compromised by avoidable hygienic deficiencies.

Illustrative Evidence Considerations

Illustrative evidence may include:

- direct observation of meal support;
- observations of food, drink, utensils, surfaces, and immediate meal environment;
- communication records;

- consumer or caregiver feedback;
- support documentation; and
- other evidence supporting the Quality Claim Statement.

Indicator 7.2 — Appropriate Use of Clean Technique Within Role Boundaries

Context Interpretation

Within the meal support context, realization of the intended function requires appropriate clean practices consistent with the Personal Care Aide role.

Context-Specific Quality Outcome Criteria

For this indicator in the meal support context, Quality Outcome Criteria include, as applicable to the declared service boundary:

- clean techniques appropriate to the meal support context are applied;
- contamination risks are minimized within Personal Care Aide role boundaries;
- hygienic practices remain appropriate throughout meal support;
- activities beyond the Personal Care Aide role are not undertaken.

Illustrative Evidence Considerations

Illustrative evidence may include:

- direct observation;
- communication records;
- support documentation;
- consumer feedback;
- reports concerning hygienic practices; and
- other evidence relevant to the Quality Claim Statement.

Indicator 7.3 — Prevention of Cross-Contamination

Context Interpretation

Meal support may involve conditions in which cross-contamination could occur between clean and soiled utensils, surfaces, hands, food, drink, dishes, leftovers, trash, personal items, body fluids, or other service-related elements.

Context-Specific Quality Outcome Criteria

For this indicator in the meal support context, Quality Outcome Criteria include, as applicable to the declared service boundary:

- avoidable cross-contamination is minimized;
- clean and contaminated materials are appropriately managed;
- contamination concerns affecting meal support are recognized;
- realization of the intended function remains consistent with hygienic service conditions.

Illustrative Evidence Considerations

Illustrative evidence may include:

- direct observation;
- communication records;
- support documentation;
- consumer or caregiver feedback;
- reports of contamination concerns; and
- other evidence supporting the Quality Claim Statement.

Indicator 7.4 — Recognition and Escalation of Infection or Contamination Risks

Context Interpretation

During realization of the meal support service, infection-related or contamination-related concerns may become visible that require communication or escalation within the Personal Care Aide role.

Context-Specific Quality Outcome Criteria

For this indicator in the meal support context, Quality Outcome Criteria include, as applicable to the declared service boundary:

- observable infection or contamination concerns are recognized;
- concerns requiring additional attention are communicated appropriately;
- escalation occurs through appropriate channels where necessary;
- realization of the intended function remains consistent with the authorized Personal Care Aide role.

Illustrative Evidence Considerations

Illustrative evidence may include:

- communication records;
- support documentation;
- reports of observed concerns;
- supervisor or caregiver feedback;
- follow-up records; and
- other evidence relevant to the Quality Claim Statement.

8.9 Factor 8 — Scope-Appropriate Practice and Judgment

Indicator 8.1 — Practice Within Authorized Role Boundaries

Context Interpretation

Within the meal support context, realization of the intended function requires that meal support be provided within the authorized Personal Care Aide role.

Context-Specific Quality Outcome Criteria

For this indicator in the meal support context, Quality Outcome Criteria include, as applicable to the declared service boundary:

- meal support remains within the authorized Personal Care Aide role;
- occupational responsibilities are clearly distinguished from responsibilities belonging to other parties;
- role boundaries are maintained throughout realization of the meal support service;
- realization of the intended function is not compromised by role overreach.

Illustrative Evidence Considerations

Illustrative evidence may include:

- direct observation of meal support;
- communication records;
- support documentation;
- supervisor observations;
- consumer or caregiver feedback; and
- other evidence supporting the Quality Claim Statement.

Indicator 8.2 — Appropriate Judgment Within Role Scope

Context Interpretation

Meal support frequently requires judgment regarding pace, sequence, positioning, privacy, communication, food and drink presentation, utensils, hygiene, environmental conditions, and changing functional presentation.

Context-Specific Quality Outcome Criteria

For this indicator in the meal support context, Quality Outcome Criteria include, as applicable to the declared service boundary:

- judgment remains appropriate to the meal support context;
- decisions are responsive to actual service conditions;
- uncertainty results in appropriate communication or clarification;
- realization of the intended function remains the primary consideration.

Illustrative Evidence Considerations

Illustrative evidence may include:

- direct observation;
- communication records;
- support documentation;
- supervisor observations;
- consumer or caregiver feedback; and
- other evidence relevant to the Quality Claim Statement.

Indicator 8.3 — Avoidance of Unauthorized Diagnosis, Treatment, or Professional Practice

Context Interpretation

Meal support may reveal conditions requiring attention by healthcare, dietary, speech-language pathology, emergency, or other professionals.

Context-Specific Quality Outcome Criteria

For this indicator in the meal support context, Quality Outcome Criteria include, as applicable to the declared service boundary:

- clinical, dietary, swallowing, therapeutic, or professional responsibilities are not undertaken by the Personal Care Aide;
- observations are communicated through appropriate channels;
- role boundaries are maintained throughout realization of the meal support service;
- realization of the intended function remains consistent with the authorized occupational role.

Illustrative Evidence Considerations

Illustrative evidence may include:

- communication records;
- support documentation;
- supervisor observations;
- reports describing observed concerns;
- consumer or caregiver feedback; and
- other evidence supporting the Quality Claim Statement.

Indicator 8.4 — Appropriate Pausing, Assistance Seeking, and Escalation

Context Interpretation

During realization of the meal support service, conditions may arise in which safe continuation is no longer appropriate.

Context-Specific Quality Outcome Criteria

For this indicator in the meal support context, Quality Outcome Criteria include, as applicable to the declared service boundary:

- unsafe continuation of meal support is avoided;
- assistance is sought when appropriate;
- escalation occurs through authorized channels;
- realization of the intended function remains consistent with occupational role boundaries.

Illustrative Evidence Considerations

Illustrative evidence may include:

- communication records;
- incident documentation;
- supervisor observations;
- support documentation;
- consumer or caregiver feedback; and
- other evidence relevant to the Quality Claim Statement.

9. Context-Specific Evidence

9.1 General

Evidence supports determination of the quality state of the Personal Care Aide Service Quality Object within the meal support context.

Evidence shall be evaluated in relation to:

- the declared Service Quality Object;
- the intended function;
- realization of the intended function;
- the applicable Core Quality Factors;
- the applicable Core Quality Indicators;
- the context-specific Quality Outcome Criteria;
- Critical Conditions identified in Section 11; and
- the declared Quality Claim Statement.

Evidence shall be interpreted together with PCA1, SCM1, the declared service boundary, the applicable Quality Outcome Criteria, and any stated limitations or uncertainties.

9.2 Purpose of Evidence

Within the meal support context, evidence provides the basis for determining whether the intended function of the Service Quality Object has been realized.

Evidence supports quality determination rather than assumptions, opinions, isolated observations, task completion alone, or unsupported conclusions.

9.3 Sources of Evidence

Evidence may be obtained from one or more appropriate sources, including:

- direct observation of the meal support service;
- observation of realization of the intended function;
- observations of the meal environment, food and drink setup, utensils, and related materials;
- observations of positioning, pacing, hydration support, refusal, comfort, hygiene, contamination conditions, and response to meal-specific concerns;
- communication with the person receiving support;
- communication with the Personal Care Aide;

- information from family members or authorized caregivers;
- service documentation;
- incident and communication records;
- observations by supervisors or qualified reviewers; and
- other reliable and relevant sources.

No single source of evidence shall automatically determine the quality state of the Service Quality Object.

9.4 Evidence Across Function Realization

Evidence may be obtained before, during, and after realization of the meal support service.

Examples include:

- planned service conditions before meal support begins;
- observations made during realization of the meal support service;
- communication and follow-up after completion of the meal support service.

Because some conditions become visible only during actual service realization, evidence should reflect both planned conditions and realized conditions.

For PAF1, evidence should be sufficient to show not only that a meal occurred, but that relevant meal-specific conditions were visible within the evidence basis. Depending on the declared Quality Claim Statement, evidence may need to address the actual meal setup, positioning, posture, food and drink temperature, texture or restriction information as communicated, hydration support, refusal, pacing, cueing, hygiene and contamination conditions, utensil or equipment usability, observable comfort, coughing or choking-related concerns, role-appropriate escalation, and applicable Critical Conditions.

9.5 Sufficiency of Evidence

Evidence shall be relevant, sufficient, appropriate, and proportionate to the declared service boundary and to the Quality Claim Statement being made.

Evidence sufficiency depends upon:

- the scope of the Quality Claim Statement;
- the significance of the quality determination;
- the available evidence;
- identified uncertainties; and
- limitations affecting interpretation.

Limitations affecting evidence, Quality Outcome Criteria interpretation, Critical Conditions, or service-boundary interpretation shall be acknowledged when communicating Quality Claim Statements.

9.6 Relationship to Boundaries and Interfaces

Evidence should support verification of significant boundaries and interfaces affecting realization of the intended function.

Examples include:

- interaction between the person and the Personal Care Aide;
- interaction with food, drink, utensils, and the meal environment;
- communication interfaces;
- equipment or adaptive-item interfaces;
- information interfaces; and
- other interfaces relevant to the declared Service Quality Object.

Verification of these interfaces supports responsible quality determination and helps prevent Quality Claim Statements from exceeding the declared service boundary.

9.7 Relationship to Quality Claim Statements

Evidence collected within the meal support context provides the foundation for responsible Quality Claim Statements and limits the permissible scope of those statements.

For PAF1, the evidence basis should make visible the meal-specific conditions relevant to the claim, including material boundary, interface, risk, dignity, autonomy, hygiene, food and drink, hydration, positioning, equipment, information, escalation, and Critical Condition considerations. Where those conditions are not sufficiently evidenced, the Quality Claim Statement shall be limited accordingly.

10. Context-Specific Quality Claim Statements

10.1 General

A Quality Claim Statement communicates the determined quality state of the Personal Care Aide Service Quality Object within the meal support context.

A Quality Claim Statement using this Guide shall be bounded by the declared Service Quality Object, declared service boundary, applicable Quality Outcome Criteria, evidence basis, applicable Critical Conditions, and identified limitations.

10.2 Basis for Quality Claim Statements

A Quality Claim Statement shall be based on sufficient evidence showing whether the intended function has been realized in the declared meal support context and service boundary.

The statement shall not be based solely on meal completion, food preparation, intake amount, documentation, absence of complaint, routine performance, or absence of observed concern. A responsible claim should make clear whether material meal-specific conditions such as positioning, food and drink conditions, hydration support, refusal, hygiene, contamination, communication, and escalation were within the assessed boundary and evidence basis.

10.3 Scope of Quality Claim Statements

A Quality Claim Statement should identify, at minimum:

- the declared meal support context;
- the person or service population to which the claim applies, where appropriate;
- the service period or episode assessed;
- the included and excluded boundaries and interfaces;
- the applicable Core Quality Indicators and Quality Outcome Criteria;
- the evidence basis;
- any limitations, assumptions, or uncertainties; and
- any relevant Critical Conditions, including whether they were resolved, limited, excluded, or not sufficiently evidenced.

10.4 Limitations of Quality Claim Statements

A Quality Claim Statement shall identify material limitations affecting the scope or credibility of the claim, including:

- evidence limitations;
- unobserved meal episodes;
- unverified food, drink, positioning, equipment, or hygiene conditions;
- uncertainty regarding care direction or consumer instruction;
- unresolved risk or Critical Conditions;
- conditions outside the Personal Care Aide role; and
- conditions outside the declared service boundary.

10.5 Communication of Quality Claim Statements

Quality Claim Statements should be communicated in clear, bounded, and non-misleading language that preserves the specific meal-support context assessed.

They should not imply that the entire PCA service, provider organization, clinical care, nutrition plan, food-service system, or meal system has been evaluated unless that scope is explicitly declared and supported by evidence.

10.6 Relationship to Evidence

Evidence defines the permissible scope of the Quality Claim Statement and determines whether the claim should be made, limited, qualified, or withheld.

Where evidence does not sufficiently address material meal-specific conditions, such as positioning, food and drink conditions, pacing, refusal, hygiene, contamination, communication, or escalation, the claim shall be limited, qualified, or withheld.

Quality Claim Statements shall also consider Critical Conditions identified in Section 11. Where a Critical Condition is unresolved, not evidenced, or outside the declared boundary, the claim shall be limited, qualified, or withheld as appropriate.

11. Context-Specific Critical Conditions

11.1 General

Critical Conditions are context-specific conditions whose failure, absence, unresolved uncertainty, or loss of visibility may prevent reliable realization of the intended function or make a Quality Claim Statement unsupported or misleading.

In the meal support context, Critical Conditions may relate to safety, bodily integrity, dignity, autonomy, infection or contamination risk, information continuity, role boundaries, or escalation.

11.2 Relationship to Function Realization

Critical Conditions are not additional Core Quality Factors or Core Quality Indicators.

They identify conditions that may be especially important when applying the Core Quality Factors and Indicators to meal support.

A Critical Condition may affect multiple Factors and Indicators at the same time.

11.3 Illustrative Meal-Specific Critical Conditions

Illustrative meal-specific Critical Conditions may include:

- unsafe continuation of meal support when choking signs, coughing, breathing difficulty, distress, or unsafe positioning are present;
- missing, unclear, conflicting, or unresolved information about diet, texture, allergy, restriction, hydration, positioning, swallowing-related direction, or supervision direction where that information is necessary for safe support;
- food or drink temperature, freshness, contamination, or setup conditions that may create foreseeable harm;
- refusal, distress, or inability to participate that is ignored or overridden;
- loss of dignity, coercion, shaming, rushing, or force during eating or drinking assistance;
- failure to communicate significant reduced intake, dehydration concerns, distress, choking-related concern, contamination concern, or other relevant change through appropriate channels;
- role overreach into clinical, dietary, swallowing, therapeutic, or emergency responsibilities beyond the Personal Care Aide role;
- lack of sufficient evidence for material meal-specific conditions when a Quality Claim Statement is being made.

11.4 Visibility of Critical Conditions in Quality Determination

Quality determination should consider whether relevant Critical Conditions were visible within the evidence basis.

If a Critical Condition is present, unresolved, outside the declared boundary, or not sufficiently evidenced, the Quality Claim Statement should be limited, qualified, or withheld as appropriate to the claim being made.

12. Limitations and Non-Prescriptive Interpretation

12.1 General

This Context Guide supports quality interpretation. It does not prescribe methods of meal support or replace controlling requirements.

12.2 Non-Prescriptive Interpretation

This Guide does not prescribe recipes, diets, food textures, feeding methods, utensils, positioning methods, schedules, staffing models, documentation forms, or training curricula. It identifies how these matters may become quality-relevant when they affect the meal support service within the declared boundary.

Specific methods remain governed by applicable care direction, consumer direction, clinical direction, organizational policy, law, and authorized role boundaries.

12.3 Limits of Task Completion

Completion of a meal task, serving food, preparing a drink, observing intake, writing a note, or absence of complaint does not, by itself, demonstrate satisfactory realization of the intended function.

Quality determination requires evidence linked to the applicable Quality Outcome Criteria and the declared service boundary.

12.4 Non-Substitutability of Critical Conditions

Strong performance on one Factor or Indicator does not automatically compensate for unresolved failure of another critical Factor, Indicator, or context-specific Critical Condition.

For example, respectful interaction does not substitute for unsafe positioning, and documentation does not substitute for failure to communicate a choking concern.

12.5 Limits of Documentation and Compliance

Documentation and compliance records may provide evidence but are not substitutes for the quality state of the Service Quality Object.

Evidence should support what occurred in the actual meal support context, not only what was planned or recorded.

12.6 Limits of Absence-of-Concern Interpretation

The absence of a complaint, incident, or recorded concern shall not automatically be interpreted as evidence that the meal support service satisfied applicable Quality Outcome Criteria.

Some meal-specific conditions may be invisible unless actively observed, communicated, or evidenced.

12.7 Relationship to PCA1 and SCM1

This Guide shall be interpreted together with PCA1 and SCM1.

PCA1 defines the Core Standard. PAF1 provides meal-specific interpretation. SCM1 governs verification of evidence and responsible Quality Claim Statements.

13. Relationship to Care Direction, Training, Rules, and Other Requirements

13.1 General

Meal support occurs within care direction, consumer direction, organizational procedures, training, legal requirements, and other controlling conditions.

This Guide does not replace those requirements.

13.2 Care Direction and Consumer Direction

Meal support should remain consistent with applicable care direction and authorized consumer direction.

Where care direction, consumer direction, or actual conditions create uncertainty, the uncertainty should be communicated or escalated through appropriate channels.

13.3 Training and Competence Context

Training and competence may influence whether the Personal Care Aide can recognize and respond appropriately to meal-specific conditions.

This Guide does not establish a training curriculum but may help identify topics relevant to meal support quality.

13.4 Organizational and Program Requirements

Provider organizations, consumer-directed arrangements, and programs may establish rules for meal support, documentation, supervision, escalation, and communication.

Such requirements may provide evidence or context but do not replace the quality determination required under PCA1 and this Guide.

13.5 Clinical, Legal, Safety, and Emergency Responsibilities

Clinical, dietary, swallowing, nutrition, emergency, regulatory, and legal responsibilities remain with the appropriate authorized parties.

The Personal Care Aide should remain within Personal Care Aide role boundaries while recognizing, communicating, pausing, seeking assistance, or escalating concerns where appropriate.

13.6 Relationship to Other AMSI Context Guides

Other AMSI PCA Context Guides may address related support contexts such as bathing, mobility, dressing, toileting, medication assistance within Personal Care Aide role boundaries, or household support.

Where multiple contexts interact, Quality Claim Statements should identify the declared context, service boundary, relevant interfaces, and evidence basis for the claim.

Annex A (Informative) - Illustrative Service Quality Object in Meal Support

A.1 Purpose

This Annex illustrates how the Personal Care Aide Service Quality Object may be understood in the meal support context. Figure A.1 provides a visual example of this relationship.

A.2 Relationship to the Service Quality Object

The Service Quality Object remains the complete PCA service as established by PCA1. Meal-specific elements such as food, drink, utensils, seating, timing, and meal environment are context elements or interface conditions unless specifically included in the declared service boundary for a Quality Claim Statement.

A.3 Illustrative Constituent Parts

- person receiving support;
- Personal Care Aide;
- meal support work performed;
- results produced by that work;
- intended function as realized during meal support;
- internal boundaries and interfaces;
- external boundary and external interfaces.

A.4 Illustrative Function Realization

Function realization may be visible when the person receives meal support that is safe, respectful, appropriately paced, consistent with authorized direction, responsive to actual ability, attentive to food and drink conditions, supportive of hydration and daily functioning, hygienic, and within Personal Care Aide role boundaries.

A.5 Illustrative Relationship to Quality Determination

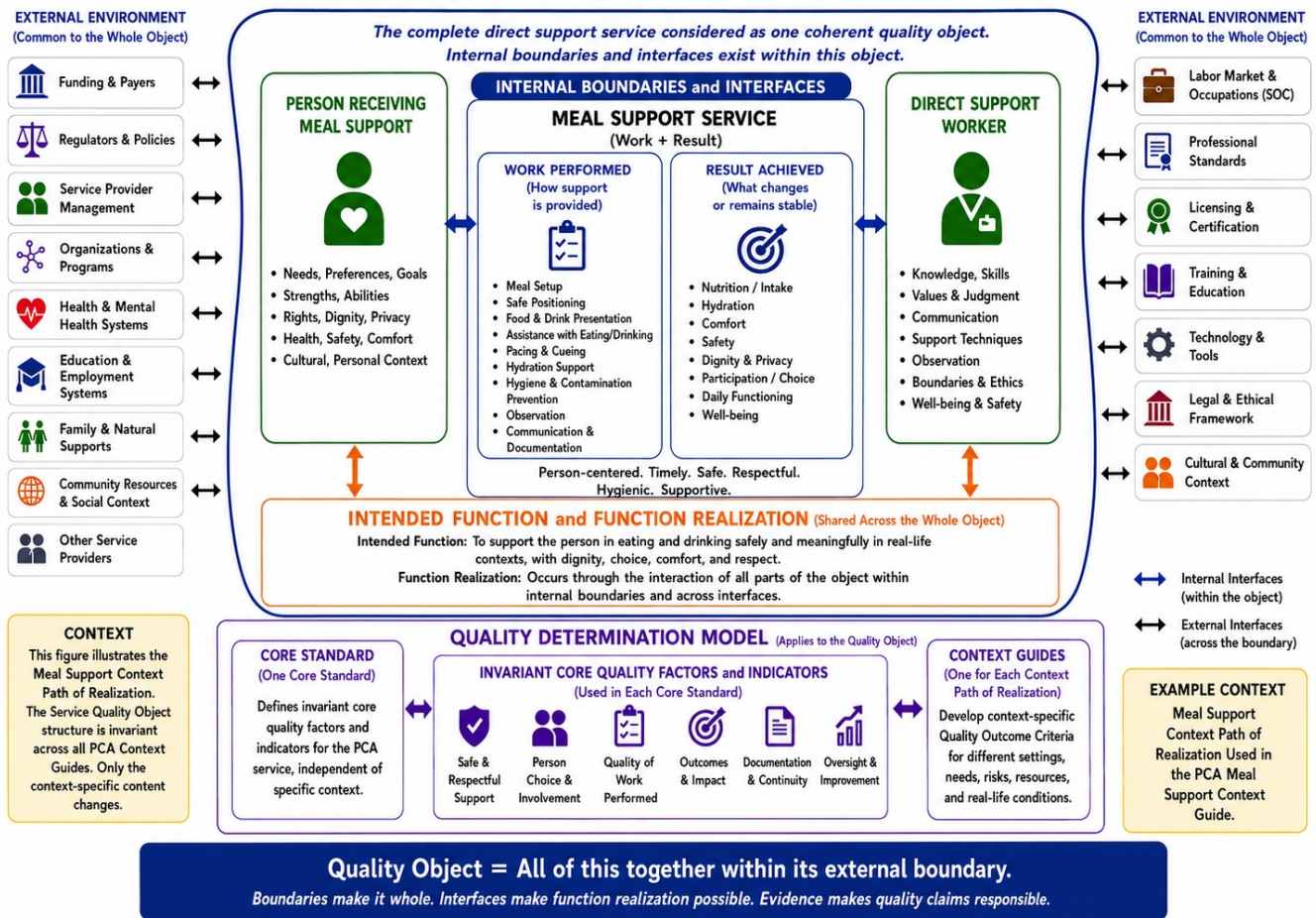
Quality determination should not be based only on whether food was served or consumed. It should consider the work performed, the result produced, the relevant boundaries and interfaces, the applicable Quality Outcome Criteria, the available evidence, and any Critical Conditions.

A.6 Illustrative Meal Support Service Quality Object Diagram

A meal-specific diagram illustrates the relationship among the person receiving support, Personal Care Aide, meal support work, results produced, intended function, boundaries, interfaces, evidence, and Quality Claim Statements.

Figure A.1 — Personal Care Aide Service Quality Object (Meal Support Context)

One coherent quality object: person + direct support service (work + result) + intended function + boundaries.



Annex B (Informative) - PCA1 and PAF1 Core-to-Context Relationship

B.1 Purpose

This Annex summarizes the relationship between PCA1 and this Meal Support Context Guide.

B.2 Invariant Core

PCA1 establishes the invariant Service Quality Object, intended function, Core Quality Factors, and Core Quality Indicators for Personal Care Aide services.

B.3 Purpose of the Context Guide

PAF1 applies the PCA1 Core to the specific context of meal support. It develops meal-specific Quality Outcome Criteria, evidence considerations, Critical Conditions, and Quality Claim Statement guidance.

B.4 Relationship Between the Core and the Context Guide

The Context Guide interprets the Core Standard. It does not replace the Core Standard and does not create separate Core Quality Factors or Core Quality Indicators.

B.5 Relationship to Other PCA Context Guides

Other PCA Context Guides may apply the same Core Standard to other contexts, such as bathing or mobility support. The Core remains the same, while Quality Outcome Criteria and evidence vary by context.

B.6 Core-to-Context Principle

The Core Standard remains stable. Context Guides make the Core visible in real service contexts.

Annex C (Informative) - Summary of Meal-Specific Factor Interpretation

C.1 Purpose

This Annex provides a short summary of how each PCA1 Core Quality Factor is interpreted in the meal support context.

C.2 Interpretation of the Core Quality Factors

- Factor 1: foreseeable harm includes choking signs, unsafe positioning, hot food or drink, spills, contamination, allergy or restriction information as communicated, and unsafe continuation of support.
- Factor 2: health and bodily integrity include hydration-related support, nutrition-related daily functioning, physiological tolerance, comfort, and observable changes within Personal Care Aide role boundaries.
- Factor 3: daily functioning includes meaningful participation in meals, eating, drinking, hydration routines, and related activities according to ability and support need.
- Factor 4: personhood and autonomy include choice, consent, refusal, pacing, cultural or household food preferences, dignity, and freedom from coercion or shaming.
- Factor 5: recognition and escalation include timely response to coughing, choking concerns, distress, reduced intake, fatigue, contamination, unclear direction, or other relevant changes.
- Factor 6: care-relevant information includes accurate meal, hydration, allergy, restriction, texture, positioning, preference, and escalation information as applicable and authorized.
- Factor 7: infection and contamination control includes hygienic meal setup, clean handling of food-related items, prevention of cross-contamination, and communication of concerns.
- Factor 8: scope-appropriate practice includes remaining within the Personal Care Aide role and avoiding unauthorized clinical, dietary, swallowing, therapeutic, or emergency decision-making.

C.3 Relationship to PCA1

These summaries support interpretation only. They do not modify PCA1.

C.4 Core-to-Context Principle

Meal-specific interpretation keeps the real service context visible while preserving the invariant Core Standard and the declared service boundary.

Annex D (Informative) - Illustrative Meal Support Path of Realization

D.1 Purpose

This Annex provides an illustrative path showing how meal support may move from planned support to realized service and quality determination.

D.2 Relationship to PCA1

The path is illustrative only and does not create additional requirements beyond PCA1 and this Context Guide.

D.3 Illustrative Context Path of Realization

- planned meal support conditions are identified;
- the meal environment, food, drink, utensils, equipment, and information are prepared or recognized as relevant;
- the person and PCA interact during actual meal support;
- positioning, pacing, food and drink conditions, hydration support, dignity, consent or refusal, communication, hygiene, contamination concerns, and functional ability are addressed as needed;
- changes or concerns are recognized and communicated or escalated within Personal Care Aide role boundaries;
- results are evaluated against applicable Quality Outcome Criteria;

- evidence is evaluated for sufficiency; and
- a bounded Quality Claim Statement is made, limited, qualified, or withheld as appropriate.

D.4 Dynamic Nature of Function Realization

Meal support is dynamic. Conditions may change during the meal episode, including appetite, fatigue, coughing, refusal, positioning, tolerance, communication, food or drink conditions, and environmental distractions. Quality determination should therefore consider realized conditions, not only planned conditions.

D.5 Relationship to Quality Determination

The illustrative path helps reviewers see whether the intended function was realized within the declared service boundary and whether the evidence supports the Quality Claim Statement being made.

Copyright and Use Notice

Copyright © American Support Standards Initiative (AMSI), 2026. All rights reserved.

This document, PCA Context Guide - Meal Support (the "Guide"), is a publication of the American Support Standards Initiative (AMSI).

Permitted use (non-commercial).

The Guide may be used, reproduced, and distributed, in whole or in part, for informational, educational, standards-development, and non-commercial purposes, provided that all reproductions include this notice in full and clearly acknowledge AMSI as the source.

Restrictions.

No part of this Guide may be modified, adapted, abridged, translated, excerpted in a manner that alters meaning, or incorporated into another standard, specification, regulation, certification scheme, audit protocol, procurement requirement, contractual document, training credential, provider-approval process, or similar instrument without the prior written permission of AMSI.

No endorsement; no certification.

The use of terms, concepts, Quality Factors, Indicators, Quality Outcome Criteria, or other content from this Guide does not imply endorsement, approval, certification, conformity assessment, provider approval, training approval, or program approval by AMSI.

No replacement of legal, clinical, or program requirements.

This Guide does not replace, supersede, or reinterpret applicable laws, regulations, payer rules, plan-of-care requirements, clinical direction, dietary direction, supervision requirements, employment requirements, consumer-directed program rules, or other controlling obligations.

Disclaimer of warranties.

AMSI makes this Guide available on an "as is" basis, without warranty of any kind, express or implied.

Limitation of liability.

AMSI disclaims any liability for the use, interpretation, or application of this Guide.

Revisions.

AMSI reserves the right to revise, amend, replace, or withdraw this Guide at any time. Users are responsible for ensuring that they are referencing the current edition.